

A health plan created from  
experience and designed for  
what matters most - you.



# Ascension Personalized Care

2022 Marketplace Plans

# A health insurance plan created from experience and designed to give you balanced, affordable coverage



Take the confusion out of your health insurance. Ascension Personalized Care offers a variety of flexible, affordable health insurance plans, designed to be easy to understand and use, so you can focus on your health.

Ascension Personalized Care gives you access to a distinct network of primary care doctors and specialists, who listen to understand what you need to create a care plan that is right for you.

As a health insurance plan member, you will also have an experienced customer service team to help you get the most out of your health insurance plan, answer benefit questions and more, so you can make the right healthcare decisions for you and your family.

Ascension Personalized Care understands what truly matters in taking care of your health. This plan is brought to you by Ascension, your trusted health partner with over 100 years of experience in delivering personalized, compassionate care to people across the nation.

## Covered EHB benefits

Ascension Personalized Care plans provide you and your family coverage for the most important areas of care. Essential health benefits (EHB) are a set of 10 services that each health plan must cover under the Affordable Care Act. These 10 essential health benefits are:

- **Ambulatory patient services** (also known as outpatient care. This includes any services you can get without staying in the hospital.)
- **Emergency services**
- **Hospitalization**
- **Pregnancy, maternity, and newborn care**
- **Mental health and substance use disorder services, including behavioral health treatment**
- **Prescription drugs**
- **Rehabilitative and habilitative services** (health care services that help you keep, learn or improve skills and functioning for daily living) **and devices**
- **Laboratory services**
- **Preventive and wellness services and chronic disease management**
- **Pediatric services, including oral and vision care** (but adult dental and vision coverage aren't essential health benefits)

Explore plans and enroll today

Visit [ascensionpersonalizedcare.com](https://ascensionpersonalizedcare.com)  
or call 833-600-1311.



# Coverage Area

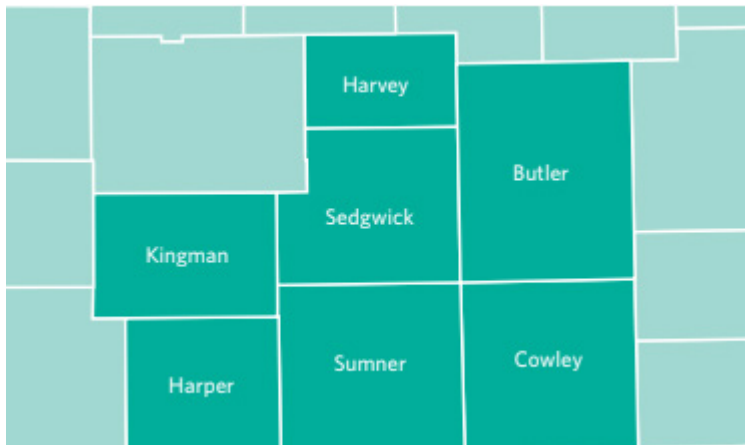
Ascension Personalized Care health plans are available in Indiana, Michigan and Kansas for 2022. Please refer to the maps below for specific county information.

## Michigan



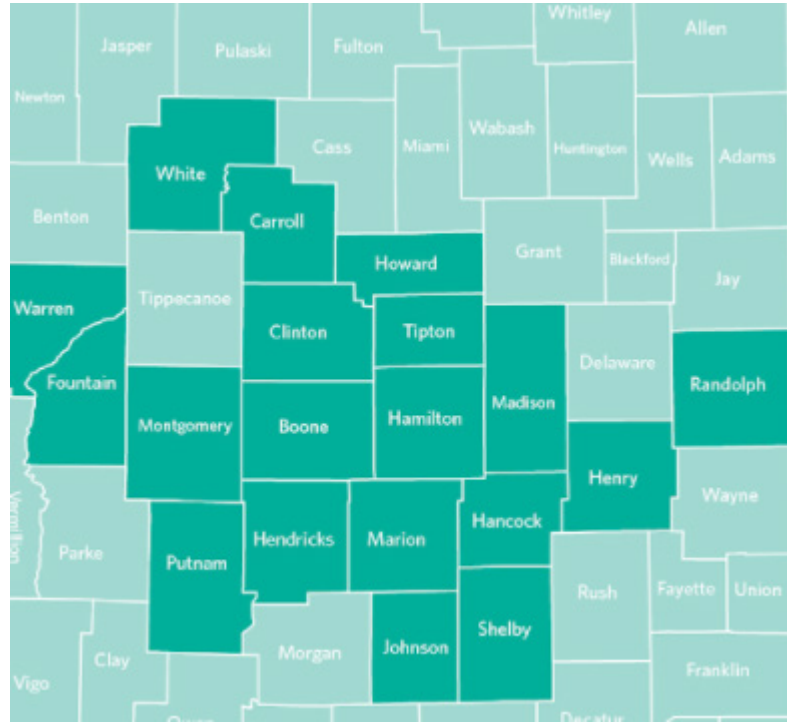
Detroit area counties: Oakland, Macomb and Wayne

## Kansas



Wichita area counties: Butler, Cowley, Harper, Harvey, Kingman, Sedgwick, and Sumner

## Indiana



Indianapolis area counties: Boone, Carroll, Clinton, Fountain, Hamilton, Hancock, Hendricks, Henry, Howard, Johnson, Madison, Montgomery, Parke, Putnam, Randolph, Shelby, Tipton, Warren, and White



Evansville area counties: Davies, Gibson, Jennings, Knox, Martin, Perry, Posey, Spencer, Vanderburgh, and Warrick

**Find doctors and locations near you**

Visit [ascensionpersonalizedcare.com/Find-a-Doctor](https://ascensionpersonalizedcare.com/Find-a-Doctor)

# 2022 Bronze plans



Ascension Personalized Care offers a variety of bronze plans to meet your families needs. These plans are best for individuals and families that do not expect many doctor appointments and have fewer prescription medications.

Bronze plans offer low monthly premiums and cover preventive services. We also offer a Health Savings Account (HSA) eligible plan that provides a tax-free way to save on healthcare costs. Use the bank of your choice to establish an HSA today.

	Balanced Bronze 1	Balanced Bronze 2	No Deductible Bronze	HSA Eligible Bronze
<b>Deductible</b>	\$8,000	\$8,700	\$0	\$7,000
<b>Out-of-Pocket Maximum</b>	\$8,700	\$8,700	\$8,700	\$7,000
<b>Coinsurance</b>	50%	0%	50%	0%
<b>Virtual PCP Visit</b>	\$25	\$10	\$25	No Charge after Deductible
<b>Virtual SCP Visit</b>	\$50	\$20	\$50	No Charge after Deductible
<b>Virtual Urgent Care</b>	\$75	\$30	\$75	No Charge after Deductible
<b>Primary Care Provider Visit</b>	\$50	\$25	\$50	No Charge after Deductible
<b>Specialist Visit</b>	\$100	No Charge after Deductible	\$100	No Charge after Deductible
<b>Emergency Room Visit</b>	50% Coinsurance after deductible	No Charge after Deductible	\$1,000	No Charge after Deductible
<b>Generic Prescription Drug Coverage</b>	\$20	\$15	\$30	No Charge after Deductible

# 2022 Silver plans

Silver plans provide important benefits and offer tax credit savings. Ascension Personalized Care has three silver plans to choose from: **Low Premium, Balanced** and **No Deductible**. While subsidies are available at any level, members that qualify for Cost-Sharing Reductions (CSR) will need to choose a silver plan to take advantage of savings on deductibles, copayments and coinsurance.



	Low Premium Silver	Balanced Silver	No Deductible Silver
<b>Deductible</b>	\$6,000	\$4,500	\$0
<b>Out-of-Pocket Maximum</b>	\$8,700	\$4,500	\$8,700
<b>Coinsurance</b>	40%	0%	0%
<b>Virtual PCP Visit</b>	\$20	No Charge after Deductible	\$10
<b>Virtual SCP Visit</b>	\$40	No Charge after Deductible	\$25
<b>Virtual Urgent Care</b>	\$50	No Charge after Deductible	\$50
<b>Primary Care Provider Visit</b>	\$40	No Charge after Deductible	\$25
<b>Specialist Visit</b>	\$80	No Charge after Deductible	\$50
<b>Emergency Room Visit</b>	40% Coinsurance after deductible	No Charge after Deductible	\$1,000
<b>Generic Prescription Drug Coverage</b>	\$25	No Charge after Deductible	\$25



# 2022 Gold plan

The Ascension Personalized Care gold plan is a great choice for members who will see their doctor regularly and may have multiple prescriptions.

Gold	
Deductible	\$3,500
Out-of-Pocket Maximum	\$6,000
Coinsurance	20%
Virtual PCP Visit	\$10
Virtual SCP Visit	\$25
Virtual Urgent Care	\$50
Primary Care Provider Visit	\$25
Specialist Visit	\$50
Emergency Room Visit	20% Coinsurance after deductible
Generic Prescription Drug Coverage	\$15



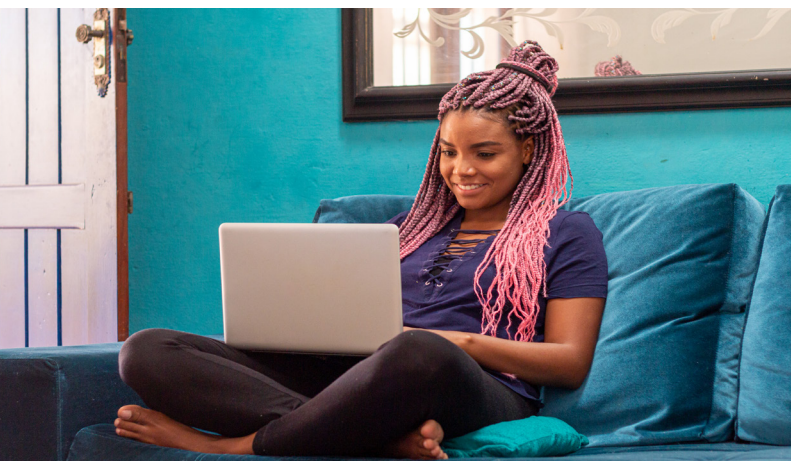
## How to enroll

To enroll in an Ascension Personalized Care bronze, silver or gold plan, visit [www.ascensionpersonalizedcare.com](http://www.ascensionpersonalizedcare.com). You can shop and compare plans, see if you qualify for cost-sharing reductions, and choose the plan that fits you and your family's needs.

Once enrolled you can also sign up for the member portal. Here you can view current plan documents, see your member ID card, view claims history, or find in-network doctors and sites of care at [www.ascensionpersonalizedcare.com/find-a-doctor](http://www.ascensionpersonalizedcare.com/find-a-doctor).

## Renew your plan

Renewing your plan is easy. Just login to your account, update your information and choose the plan that works for you.



## Questions?

Visit [ascensionpersonalizedcare.com](http://ascensionpersonalizedcare.com) or call 833-600-1311.

# Ascension benefits

---

Ascension Personalized Care offers benefits that you won't find with other insurance carriers. These benefits are unique to Ascension and offer you additional care for your mental, emotional and spiritual health.

## Allay

Allay Care helps people talk about and document their end of life preferences. Ascension created the Allay Care process to create a holistic document that creates clarity and peace of mind for everyone.

## Mindfulness meditation

How do we balance the pressure of life while maintaining a meaningful, healthy connection with ourselves? With the tools offered by Mindfulness and Meditation, you can relax and center yourself. Meditation has been a valuable tool for reducing anxiety and improving well-being for centuries, and it's easy to begin a meditation practice.

## Online behavioral health

Ascension has a compassionate, personalized approach to behavioral health. At Ascension, we understand that caring for your mind is just as important as caring for your body. That's why we offer online behavioral health treatment programs personalized for your needs as an adult, senior, adolescent, or child.



**Ascension**

Ascension Personalized Care benefits is underwritten by US Health and Life Insurance Company.